

LAKE CHELAN
HEALTH

Community Forum

May 21, 2025

AGENDA

- **Welcome, Introduction & Acknowledgments**
- **Hospital District Overview**
- **Challenges/New Services/Building Projects**
- **Community Health Needs Assessment & Non-Profit 501(c)(3)**
- **Q&A “What’s On Your Mind?”**



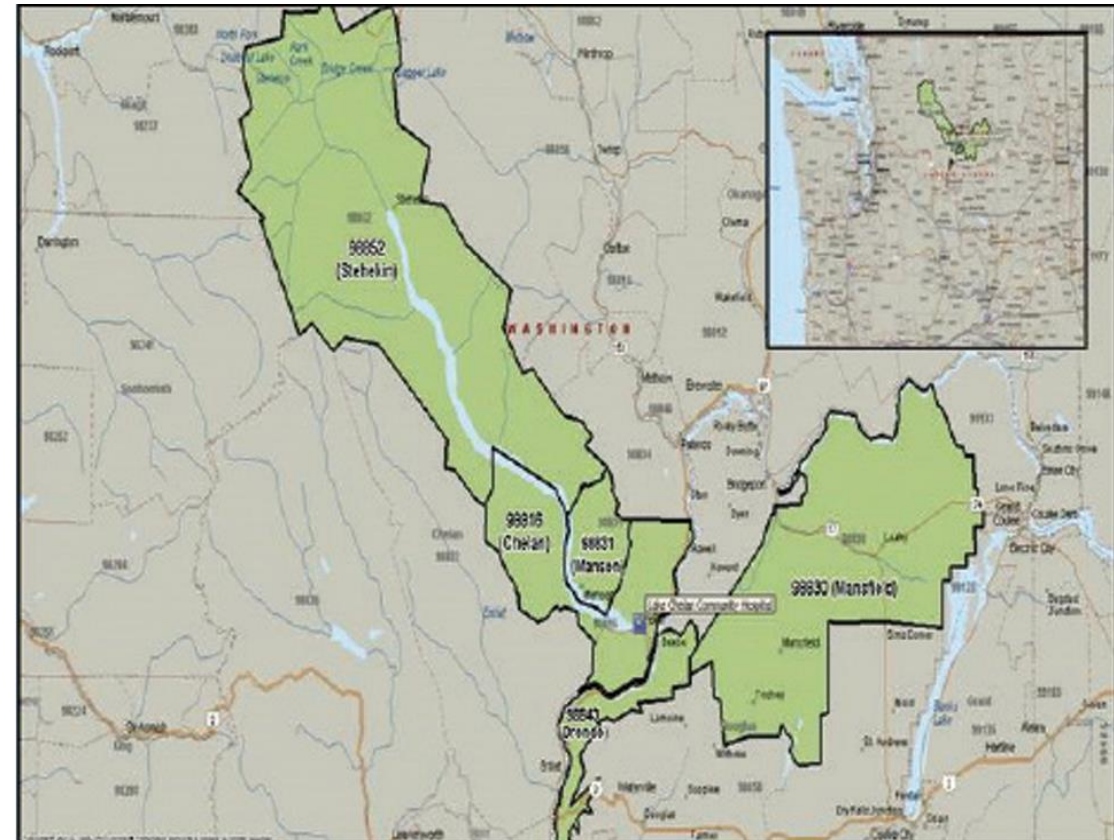
District Overview LCH & EMS

Lake Chelan Health Communities:

- Chelan, Chelan Falls, Manson, Stehekin *Pop 12,000*
- 600,000 Seasonally (*City of Chelan data*)

Lake Chelan Health EMS

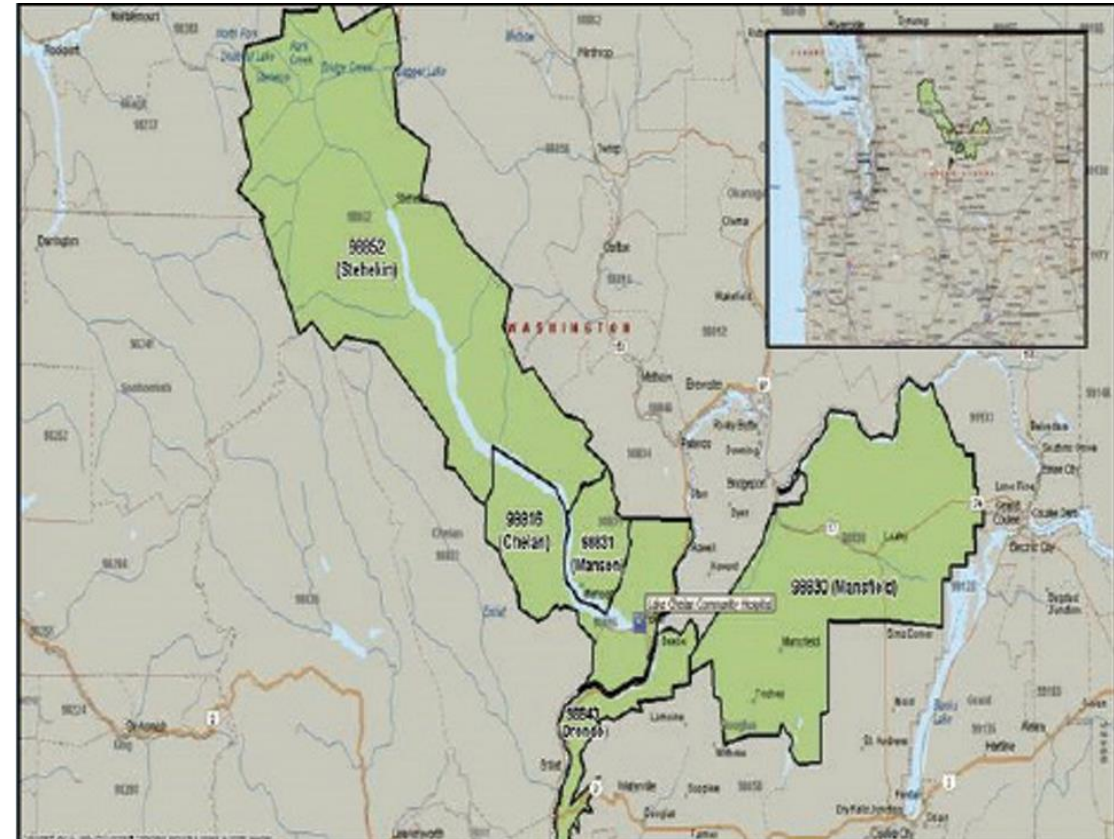
- 1,100 square miles
- Stehekin to Wells Dam to McNeil Canyon, & Sun Cove
- Chelan, Manson, Mansfield, Stehekin, northern portions of Orondo & Entiat areas.
- Advanced Life Support EMS



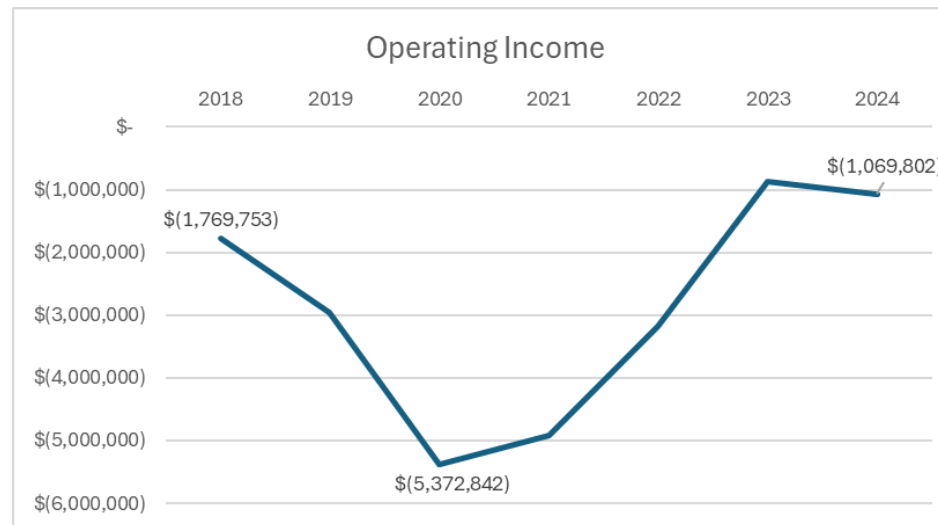
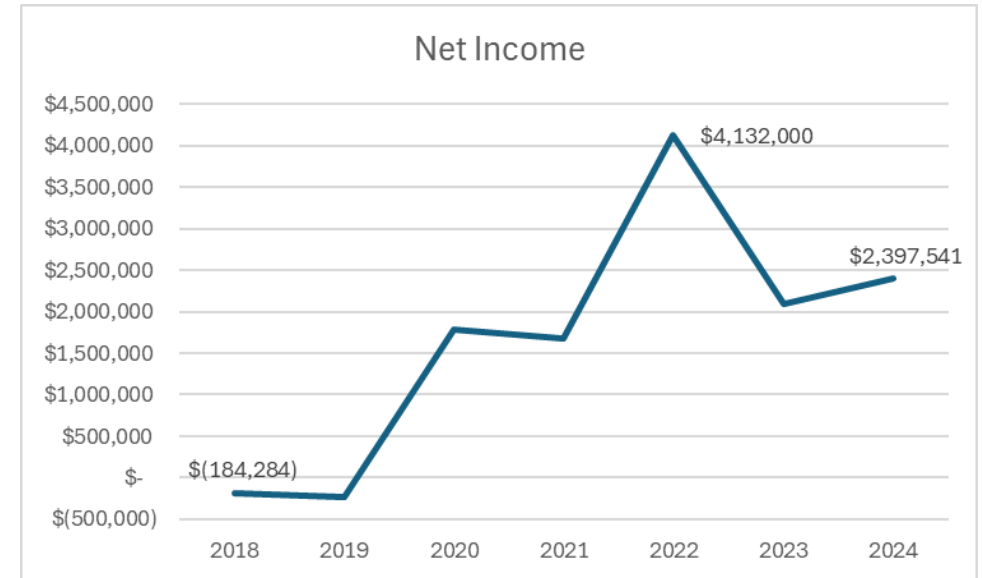
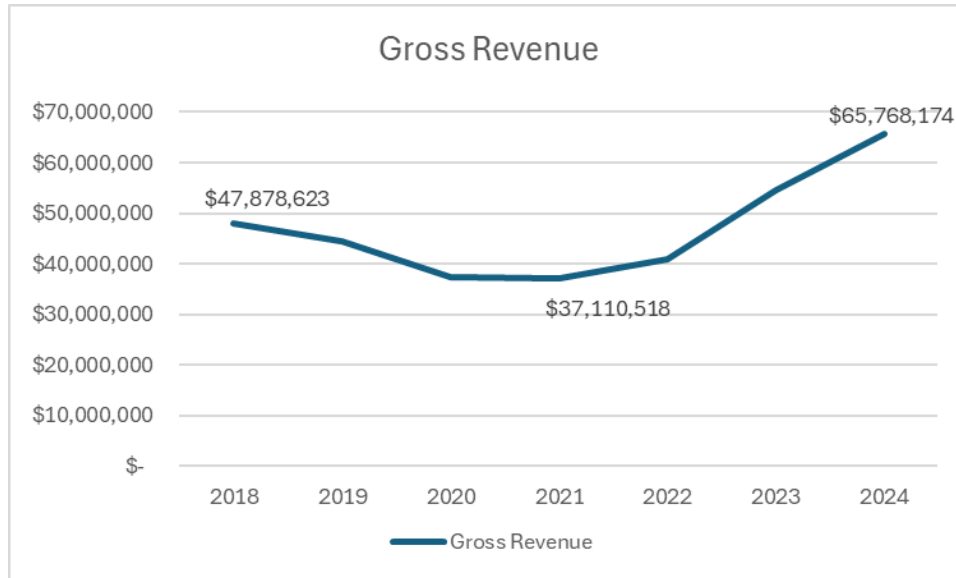
District Overview LCH & EMS

Demographics

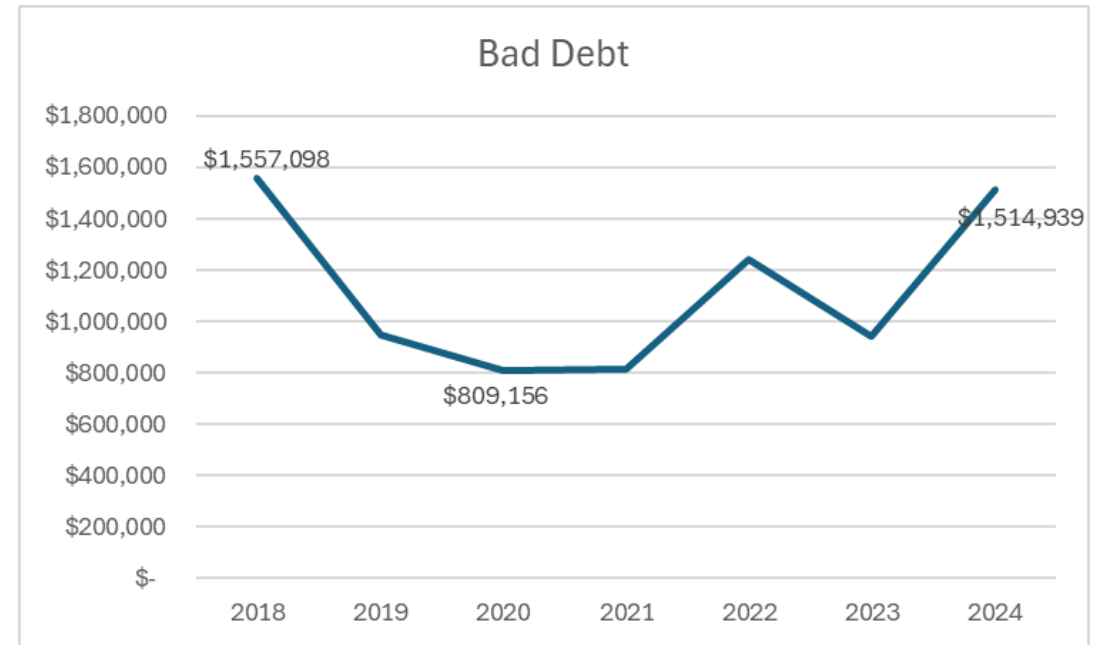
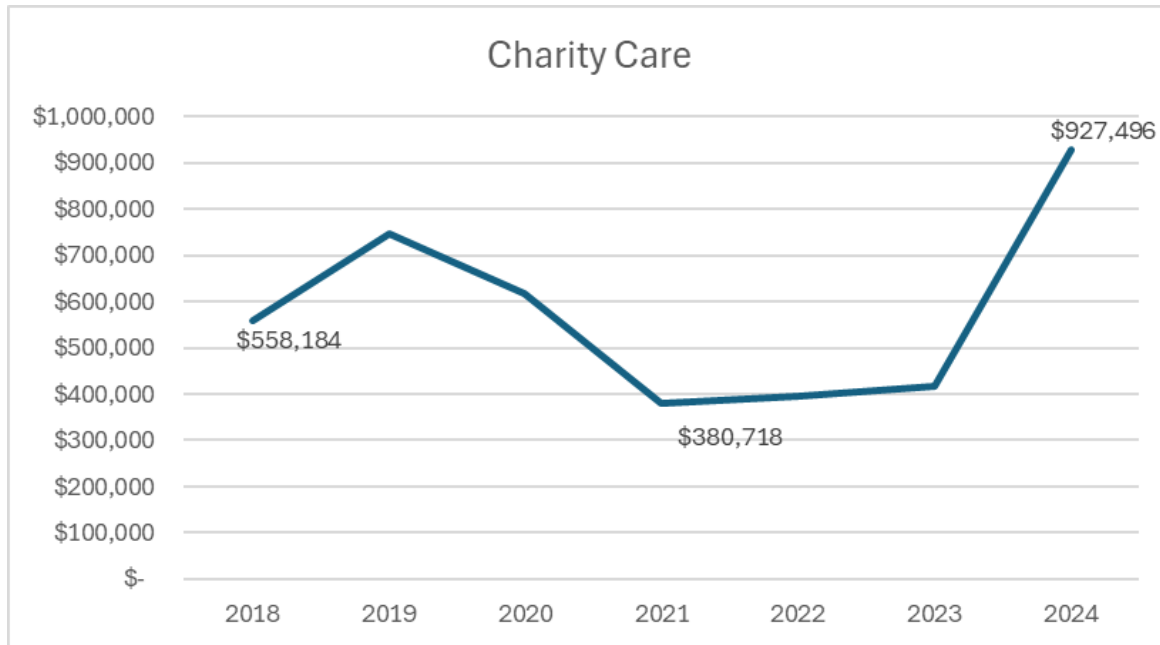
- **Population 12,000**
 - 50/50 Male – Female
 - 60% white, 35% Hispanic/Latino
 - Low Income 32%
 - Poverty 7%
- **Medical Challenges**
 - **Insurance**
 - Medicare/Private 57%
 - Medicaid/Public 19%
 - Uninsured 12%
 - No Standard care source 21%
 - **Health Status Challenges**
 - 35% High Blood Pressure
 - 29% Obese
 - 17.5% Disabilities



LCH Revenue Growth 2018-2025



Charity Care & Bad Debt



40% of charity care in 2024 came from outside our service area (\$371K).



Challenges

Financial Challenges

- **State of Washington**

- New taxes and reductions in payments to Medicaid.
- Increasing regulatory burden – staffing laws, etc.
- Rural Obstetric funding not in the 2025 budget (\$177,000 in 2024).
- No geographic boundaries for charity care (see prior slide).

- **Federal**

- Potential cuts to Medicaid (WA Apple Health) via work requirements.
- Penalties for WA state that pays for care for undocumented individuals. Estimated to be around \$700M in penalty for WA.
- Direct Provider Payments for Washington not yet approved by Medicare (in 2024 we received \$1.1M).



The Good News

- **Hospitalists & Compass Tele-Support**
 - 24/7 Physician led inpatient care
- **Specialty Clinic**
 - Dermatology (More Service Days Coming Soon) - Dr. Kasha Touloei
 - Orthopedics – Welcome Dr. James Dahl and Sports Medicine clinic with UW residents.
 - General Surgery (Vascular) - Dr. Brandon Douglass
 - Pediatrics (Starting This Fall) - Dr. Emily Renolds
 - Ear, Nose, and Throat – 5 days per month – Dr. Anne Soba-Higgly
- **In process**
 - Cardiology – 5-6 days per month
 - Mohs
 - Mobile Clinic Trailer
 - Urology
 - Cataract Surgery



Building For The Future



**Thank You Representative Mike Steele for
\$12M in Funding!**



Community Health Needs Assessment

CHNA

- State & Federal Requirement
- New assessment every 3 years with response plan
- Community has a strong voice in this process
 - Defining Issues of importance
 - Priorities for the next three years



Community Health Needs Assessment

HELP SHAPE THE FUTURE!

We need Your Voice!

Take the Survey Now!



Did You Know?

We Are A 501(c)(3)
Charitable Organization
that Accepts Tax
Deductible Donations





LAKE CHELAN
HEALTH

What's On Your Mind?

May 21, 2025

Labor and Delivery

2024 Deliveries by Patient Origin	
Service Code	V
State City Zipcode	Count of Account #
WA	91
AUBURN	1
98002	1
BREWSTER	16
98812	16
BRIDGEPORT	5
98813	5
CARLTON	1
98814	1
CHELAN	23
98816	23
MALOTT	2
98829	2
MANSFIELD	6
98830	6
MANSON	24
98831	24
OKANOGAN	2
98840	2
ORONDO	2
98843	2
PATEROS	4
98846	4
STEHEKIN	1
98852	1
TACOMA	1
98408	1
TWISP	1
98856	1
WENATCHEE	1
98801	1
WINTHROP	1
98862	1
Grand Total	91

- Service line was a net **-500K** in 2024 (includes WA State Rural OB funding).
 - Typical break even is roughly 300 births per year depending on payer mix.
- 47% of our deliveries in 2024 came from outside of our hospital district boundaries
 - Roughly 29% came from Brewster/Pateros/Bridgeport/Mallot
- Majority of our patients in this service line are Medicaid (very concerning given the pressures on Medicaid).

