

LAKE CHELAN
COMMUNITY
**HOSPITAL
& CLINICS**



2020
**Levy Renewal
Information
Included**

2019 EMS Community Report



LAKE CHELAN COMMUNITY HOSPITAL
EMERGENCY MEDICAL SERVICES

RENOVACIÓN DE EMS LEVY 2020

STRONG EFFECTIVE AND COMPREHENSIVE CARE IS THE HALLMARK LCCH EMS



Ray Eickmeyer
LCCH EMS Director

“Our paramedic-level service is one of the top-performing EMS systems in the country, EMS Performance is measured by high cardiac arrest save rates, evidence-based quality care performance measures, high quality medical oversight, access to comprehensive equipment and training...”



You can rely on Lake Chelan Community Hospital Emergency Medical Services (LCCH EMS). Our paramedic-level service is one of the top-performing EMS systems in the country.

EMS performance is measured by:

- Cardiac arrest save rates
- Evidence-based quality care performance measures
- Quality medical oversight
- Access to comprehensive equipment and training
- Engagement in community needs; like in the areas of prevention and preparedness
- The ability to adapt to the latest improvements to evidence-based healthcare

LCCH EMS continues to have one of the highest out-of-hospital cardiac save rates in the United States, and we pride ourselves with more evidence-based quality care performance measures than any other EMS organization in the region, and one of the highest in Washington state.

What are the advantages to having a hospital-based EMS system to our community?

- High quality medical oversight
- Access to advanced training opportunities
- Better pricing for life saving equipment/supplies and other resources compared to other EMS agencies

Facts about LCCH EMS service:

- We are committed to public health prevention & preparedness
- We provide medical standbys and more prevention services than any other EMS agency in the region
- Has the largest CPR and public access to defibrillation program in the region.
- Regional and state leadership in disaster preparedness
- LCCHC EMS is one of only two EMS agencies in eastern Washington that can transport a highly infectious patient.
- We are one of the very few EMS agencies with a Community Paramedicine program. Only 1% of the nation can currently access this type of service. The paramedicine program helps improve the health of patients and the community.

1972

The founding year of
Lake Chelan Valley EMS

EMS has a 66% CPR Save
Rate over the past 10 years
compared to National Average
of 10%

ABOUT OUR EMS TEAM

LCCH EMS provides the only paramedic-level Advanced Life Support in the Lake Chelan Valley. This means the difference between life and death when you have a serious injury or health crisis.

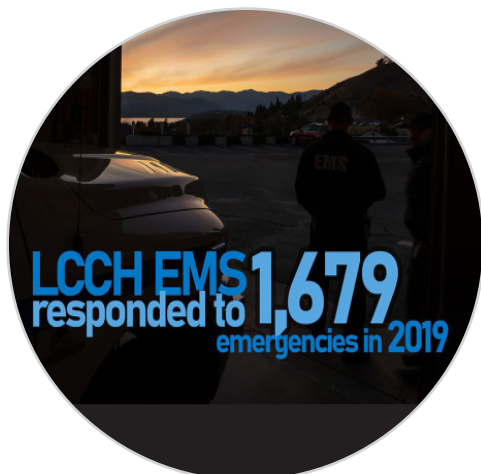


Part of our EMS Team

Our EMS team is made up of 16 Paramedics and 16 EMT's (Emergency Medical Technicians) that are a combination of Full-time and per-diem staff. Together, they form first responder ALS (Advanced Life Support) crews.

On average of 10 times a month, there is more than one emergency response calls at the same time. Backup crews must be ready for the next 911 call. In addition to covering these regular occurrences, our part-time staff works on prevention programs that help serve the community.

Daily Operations



Full-time LCCH EMS Paramedics and EMT's on average have 18 years of experience and many have experience in highly demanding systems.

Two ambulances are staffed 24/7

Each day, our goal is to better our community and operate as efficiently as possible. Daily operations consist of two staffed ALS Paramedic units and one Paramedic staffed quick response vehicle. Two ambulances are staffed 24/7. One is stationed at the hospital in Chelan, and the second stationed at Manson Fire Department's Station 52. Our partnership with the Manson Fire Department helps reduce cost, while also offering faster response times. With strategic placement of EMS crews in areas of higher need, we are able to respond to emergencies throughout our entire area quickly.

LCCH EMS also helps the hospital and clinic teams during busy times by helping care for patients.



MISSION

Our mission is to provide patient centered, quality healthcare with compassion and respect.

2019 EMS



With the Community Paramedicine Program, we help patients stay healthy in their homes.

Community Paramedicine is an extension of primary care services, designed to bring primary care and prevention services to patients' homes.

The program includes specific services to patients in their homes, follow-up care for ER visits, surgery or hospital stays.

236

Community Paramedicine visits in 2019

423

Number of people in the community trained in CPR/First-Aid classes in 2019. We provided 74 CPR/First-Aid classes.

Many of our Paramedics and EMT's are Community Health Worker Certified and CPR Instructors.



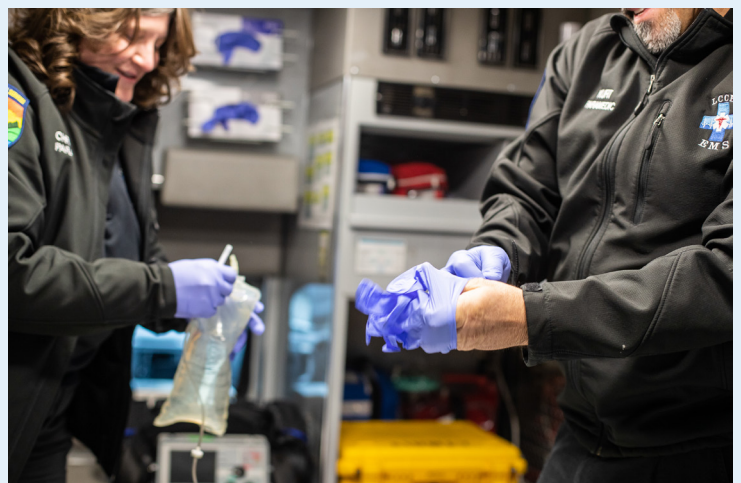
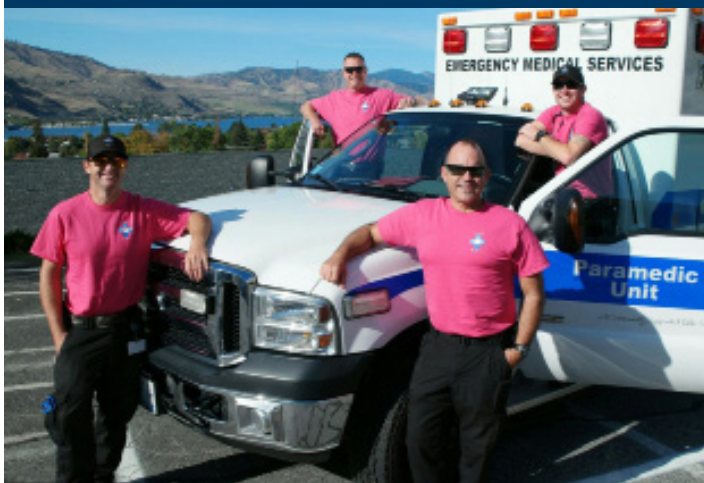
Average annual training hours per EMS provider

136+

Miles driven

53,715

We value high level monthly training sessions and additional shift trainings as part of our readiness. LCCH EMS staff members complete on average 136+ hours of training per year.



IN REVIEW



EMS PURPOSE

We save lives,
and we lessen suffering.

DID YOU KNOW...

In addition to responding to emergencies, the LCCH EMS team also participates in community outreach events for public safety education, as well as support community wellness. Each year, EMS hosts and participates in events like:

- Earth Day
- Bicycle Safety and Childhood Injury Prevention Program
- Safe Sitter classes
- First Aid and CPR classes
- Child and infant car seat inspections and free car seats
- Education at school career fairs
- Free blood pressure and glucose screenings at events like Red Dress Fashion Show and annual community health challenges
- Installation and education of Life Alert systems and public defibrillators

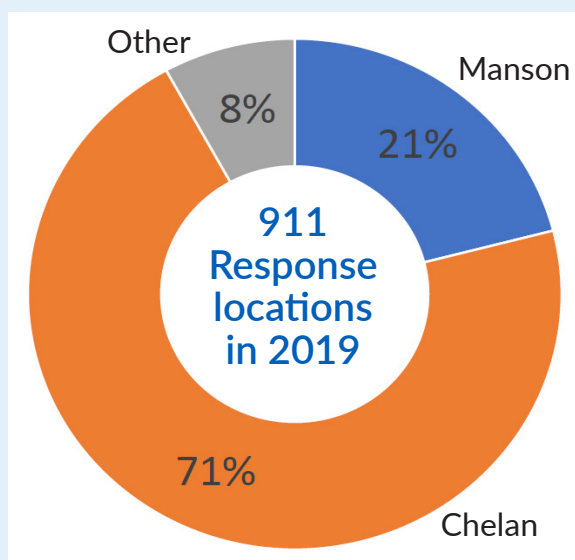
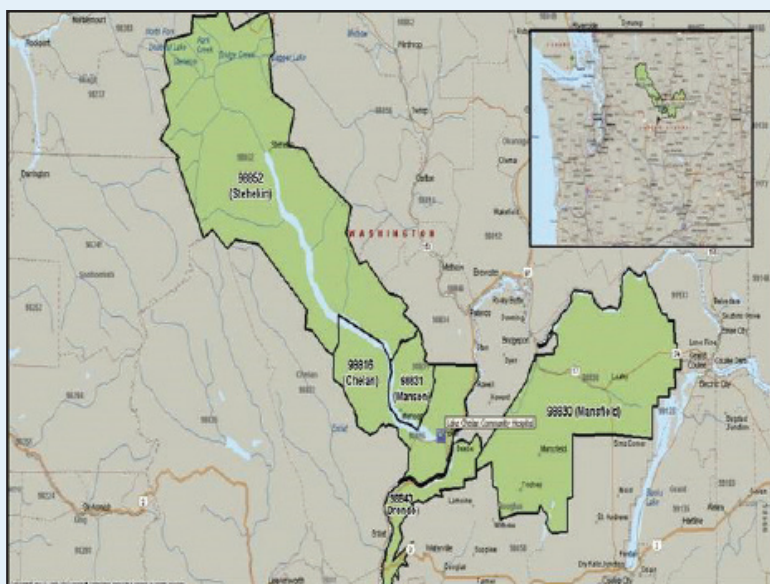


173

Community events
attended

WHERE DO WE PROVIDE MEDICAL EMERGENCY SERVICES?

The primary service area for LCCH EMS is 1,100 square miles – from Stehekin to Wells Dam to the top of McNeil Canyon and a mile past Sun Cove. We serve the communities of Chelan and Manson, as well as Mansfield, Stehekin, and the northern portions of Orondo and Entiat areas. We are the only Advanced Life Support EMS providers for all patients in this vast coverage area.



2020 EMS LEVY RENEWAL

What is a levy renewal?

On the August 4th, 2020 election ballot there is a proposition for renewing the current expiring 10-year EMS levy. This renewal levy is for 39 cents per \$1000 assessed property value. This is an 8-cent increase from the previous levy. Renewing the levy will maintain the same level of EMS services for an additional 10 years.

Does LCCH EMS need a levy to operate?

Yes. Levy money allows LCCH EMS to operate at a “budget neutral” level. LCCH EMS operates a service that is open every second of every day year-round. With round the clock services comes round-the-clock operational costs.

Rural EMS services like LCCH EMS lack the call volumes to financially sustain a stand-alone EMS agency. On average, LCCH EMS has 133 responses a month.

What do similar communities pay for their EMS levy?

One comparable levy is the hospital-based EMS system in Leavenworth, WA. Leavenworth residents recently approved an EMS levy for 50 cents per \$1,000 of the assessed property value. Lake Chelan Community Hospital EMS is asking for 39 cents per \$1,000. This would be one of the lowest EMS levies in the state.

How are you able to ask for less?

LCCH EMS asks for less for a variety of reasons.

Being levy supported allows LCCH EMS the opportunity to apply for grant funding otherwise not available. For example, in the last two years \$200,000 in grant monies were obtained for many services we provided to the community. This is a cost savings to the community. Being hospital-based decreases overhead costs and decreases cost of supplies and equipment. LCCH EMS also partners with local fire departments and other community organizations which helps reduce costs. For these reasons we have one of the lowest levy rates in the state.



What will levy money be used for?

EMS renewal levy money will be used for:

- To subsidize 2 ambulances and 1 quick response vehicle staffed by on-duty Advanced Life Support staff, 365 days a year, 24-hours a day.
- Replacement of aging ambulances. Our fleet of ambulances are well maintained to last many years. However, the aged vehicles will need to be replaced for continued service needs of our community. Our oldest ambulance is 26 years old.
- Replacement of aging lifesaving medical equipment like cardiac monitors (current monitors become obsolete February 2021) This equipment is used daily for patients.

Why new cardiac monitors?

Similar to replacement of aged ambulances, current cardiac monitors will become obsolete in early 2021 and must replace this lifesaving equipment. Current monitors will not be serviceable, upgradable, or repairable by certified technicians due to the age of the monitors and FDA regulations. The levy renewal will allow for the purchase of six new cardiac monitors. The average price per cardiac monitor is \$42,000, or \$250,000 for all six.

RENOVACIÓN DEL EMS LEVY 2020

¿Qué es una renovación de una levy?

En el boleto electoral del 4 de agosto de 2020 hay una propuesta para renovar el EMS levy actual de 10 años que se vencerá. Este gravamen de renovación es de 39 centavos por cada 1000 dólares del valor evaluado de su propiedad. Se trata de un aumento de 8 centavos con respecto al gravamen anterior. La renovación del gravamen mantendrá el mismo nivel de servicios de EMS durante 10 años adicionales.

¿Chelan EMS necesita un impuesto para operar?

Sí, el dinero de una Levy permite a Chelan EMS operar a un nivel "neutral fijo". LCCH EMS opera un servicio que está abierto cada segundo de cada día durante todo el año. Con los servicios durante todo el día, también hay costos operativos durante todo el día.

Servicios de EMS rurales como LCCH EMS no tienen los volúmenes de llamadas para mantener financieramente un servicio de EMS independiente. El Valle de Chelan responde en promedio a más de 133 llamadas por mes.

¿Qué pagan comunidades similares por una levy de EMS?

Una levy comparable es el sistema de EMS basado en hospital de Leavenworth, WA. Residentes de Leavenworth aprobaron recientemente un gravamen de EMS por 50 centavos por cada \$1,000 del valor evaluada de una propiedad. Lake Chelan Community Hospital EMS está pidiendo 39 centavos por cada \$1,000. Este sería uno de los gravámenes más bajos de EMS en el estado.

¿Cómo pueden pedir menos?

LCCH EMS puede pedir menos por varias razones.

Siendo apoyado por un gravamen permite la oportunidad a LCCH EMS a solicitar y recibir más dinero de subvención que no sería posible. Por ejemplo, en los últimos dos años se obtuvieron \$200,000 en dinero de subvención por muchos servicios que proporcionamos a la comunidad. Esto es un ahorro de costos para la comunidad. Estar en el hospital reduce los costos generales y disminuye el costo de los materiales y equipos. LCCH EMS también se asocia con departamentos locales de bomberos y otras organizaciones comunitarias, lo que ayuda a reducir los costos. Por estas razones tenemos uno de los tipos de gravamen más bajos del estado.



¿Para qué se utiliza el dinero del levy?

El dinero del gravamen de renovación de EMS se utilizará para:

- Subsidiar 2 ambulancias y 1 vehículo de respuesta rápida atendido por personal de soporte vital avanzado de guardia, 365 días al año, 24 horas al día.
- Reemplazo de ambulancias envejecidas. Nuestras ambulancias son bien mantenidas para durar muchos años. Sin embargo, los vehículos envejecidos tendrán que ser reemplazados para las necesidades de servicio continuo de nuestra comunidad. Nuestra ambulancia más antigua tiene 26 años.
- Reemplazo de equipo médico envejecido que salva vidas como monitores cardíacos (los monitores actuales se vuelven obsoletos)

¿Por qué nuevos monitores cardíacos?

Al igual que la necesidad de nuevas ambulancias, los monitores cardíacos actuales quedarán obsoletos a finales de 2020 y requerirán ser reemplazados. Nuestros monitores actuales no serán reparables, actualizables o reparables por técnicos certificados debido a la edad de los monitores y regulaciones de la FDA.

La renovación del levy permitirá la compra de seis nuevos monitores cardíacos. El precio promedio por monitor cardíaco es de \$42,000 o \$250,000 por los seis.

LAKE CHELAN COMMUNITY HOSPITAL & CLINICS

503 E HIGHLAND AVE, CHELAN WA | 509-682-3300

WWW.LAKECHELANHOSPITAL.COM

CHELAN COUNTY PUBLIC HOSPITAL DISTRICT NO. 2

PERMIT NO 21
STANDARD
NON-PROFIT ORG
PAID
CHELAN, WA
ECRWSS

POSTAL CUSTOMER

PUBLISHED BY LAKE CHELAN
COMMUNITY HOSPITAL & CLINICS

THE VALUE OF A HOSPITAL-BASED EMS PROGRAM

GEORGE ROHRICH, CEO | 509-682-3300 | GROHRICH@LCCH.NET

Hospital-based Emergency Medical Services (EMS) like we have in the Lake Chelan Valley provides a distinct value to the community. Not only is this more efficient and cost effective, but paramedics and EMTs benefit from medical oversight by physicians and other medical staff. This raises the level of care. The relationship between hospital and EMS also extends the hands of physicians to pre-hospital care providers to coordinate the best possible care for patients.

A hospital-based EMS is financially prudent and more efficient. For example, the administrative costs of adding the EMS department to the existing hospital business structures less, which decreases costs to the community.

Being based in Chelan hospital means our EMS offers a continuum of care to patients it could not otherwise provide. It allows our EMS team to assist in the hospital and clinics during their busiest times, and to provide safety management for the hospital. This alliance builds the foundation for Lake Chelan Community Hospital & Clinics to provide innovative new programs like the Community Paramedicine Program.

If you have any questions about our EMS program, please contact Ray Eickmeyer, EMS director, at 509-682-6115 or reickmeyer@lcch.net.



American Heart Association
Mission: Lifeline® EMS Silver Plus Award
Recognition for LCCH EMS

Mission: Lifeline EMS recognition is a program designed to showcase Emergency Medical Service organizations across the nation for excellent segmental elevation myocardial infarction (STEMI) care. Prehospital personnel are the first providers of care to patients suffering from cardiac emergencies. The role of EMS in the system-of-care for these patients is crucial and often sets the course for the patient's outcome. The Mission: Lifeline EMS recognition program was launched in 2014 and continues to celebrate the achievement of the pre-hospital providers and their collaboration with each other and destination hospitals specific to STEMI patient care.



THANK YOU
FOR
ALLOWING US
TO SERVE
YOU

